

# Word Families

## Based on the

### Words 'struct'

### and 'uni'



twinkl

This week, we are looking at spellings that belong to the same family of words. Knowing that a word follows a particular pattern, can make them easier to spell.

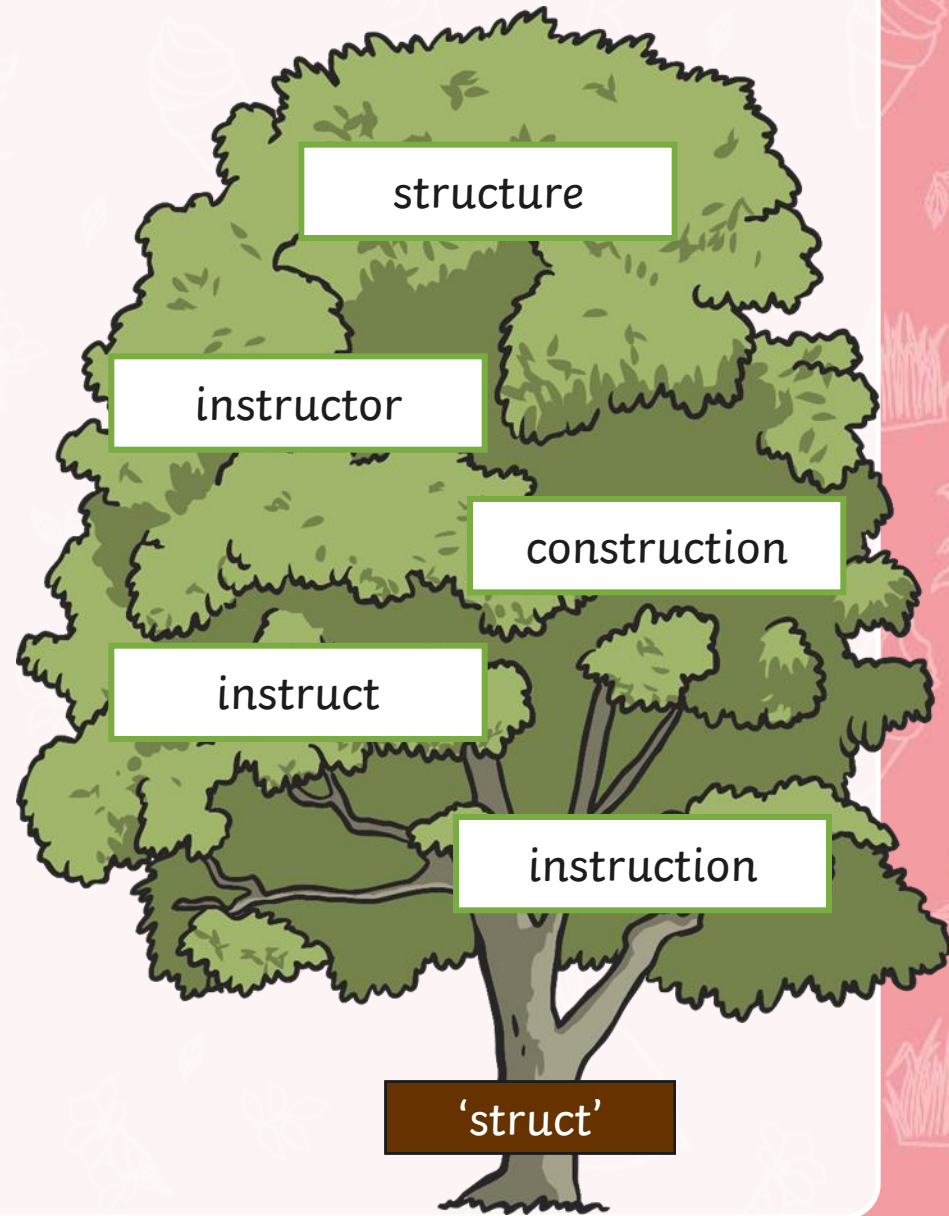
Many words share the same origin\* or root word.

\*The word 'origin' means where something came from or where it began.



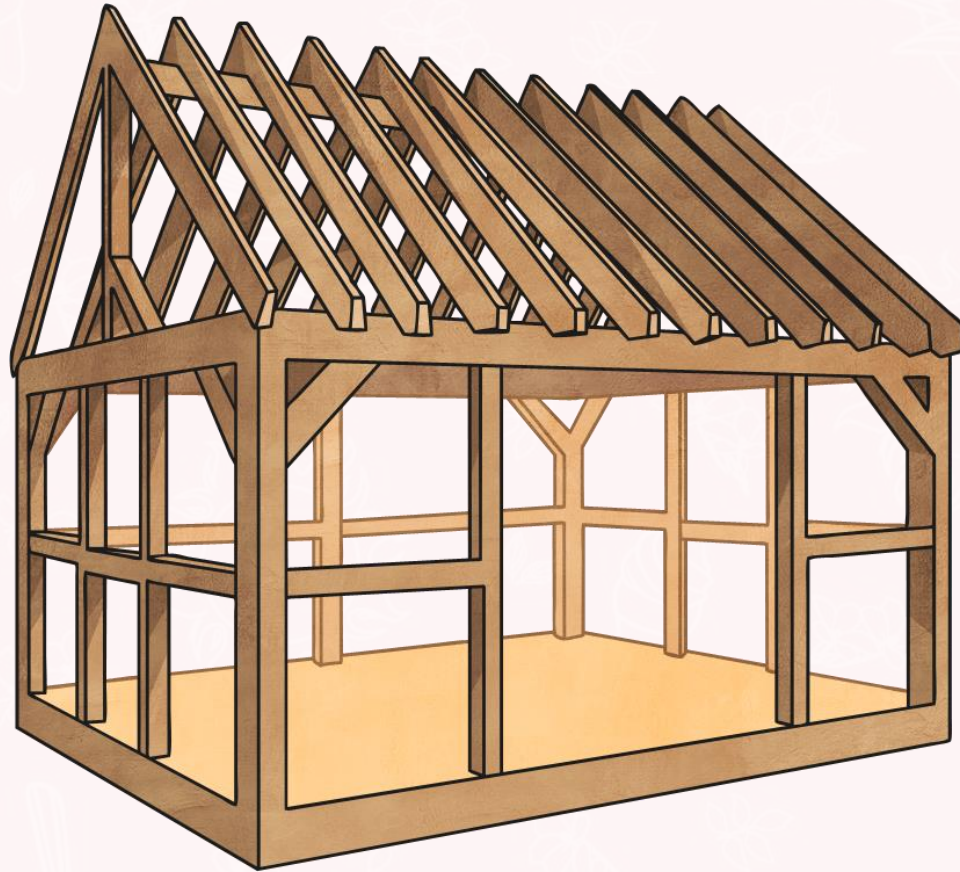


Look at the word family on this tree – do you know what all the words mean? Click on each one to see a definition.



# **structure** (noun)

a building or other object put together of several different parts

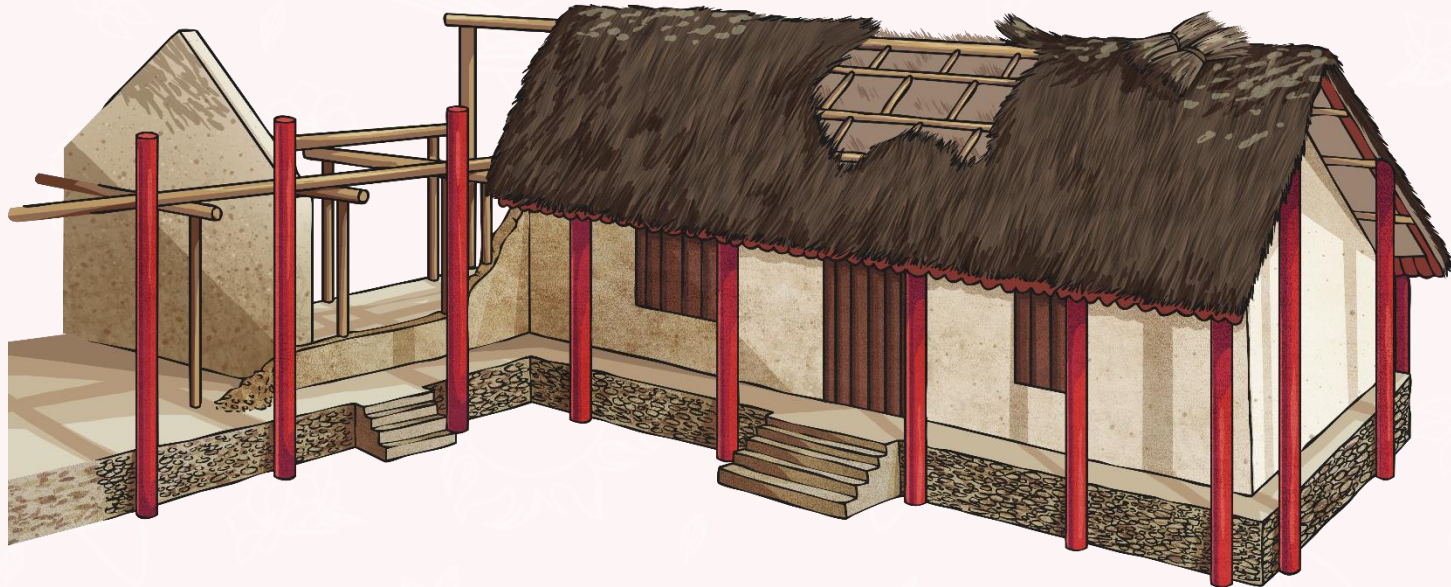


back



# construction (noun)

the act of building something, often a large structure



back

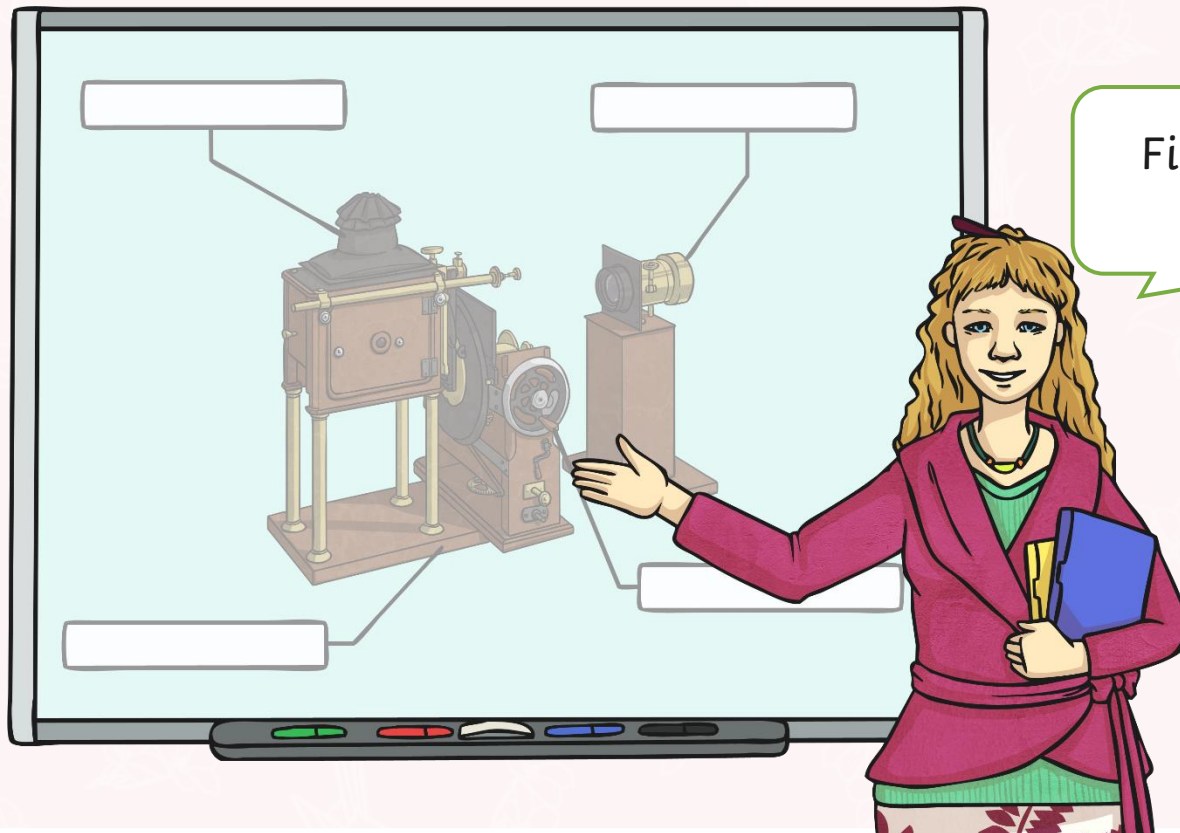
## **instruct** (verb)

to tell or order somebody to do something (often how to make something) in a particular order



# instruction (noun)

to tell or order somebody to do something (often how to make something) in a particular order



First of all, label each part.

back



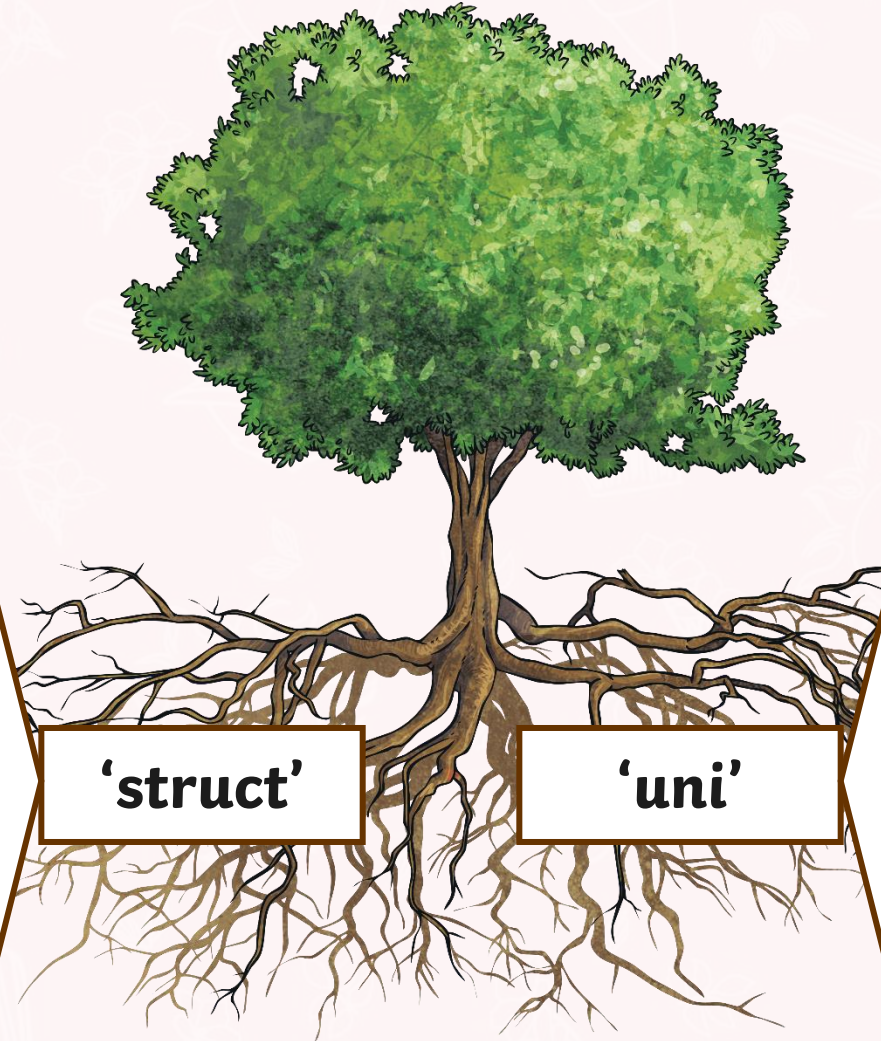
# **instructor** (noun)

a person who teaches or demonstrates something





The root words that we are looking at this week are...



Which is often connected to words that mean **built**.

**'struct'**

**'uni'**

Which is often connected with words that mean **one**.

Let's explore the root word 'uni'. Working with a partner, how many words containing 'uni' can you think of in the next five minutes?



**Start**





Look at your 'uni' spelling words for this week...

Can you guess the correct definition to the spelling word? Click definition to check.

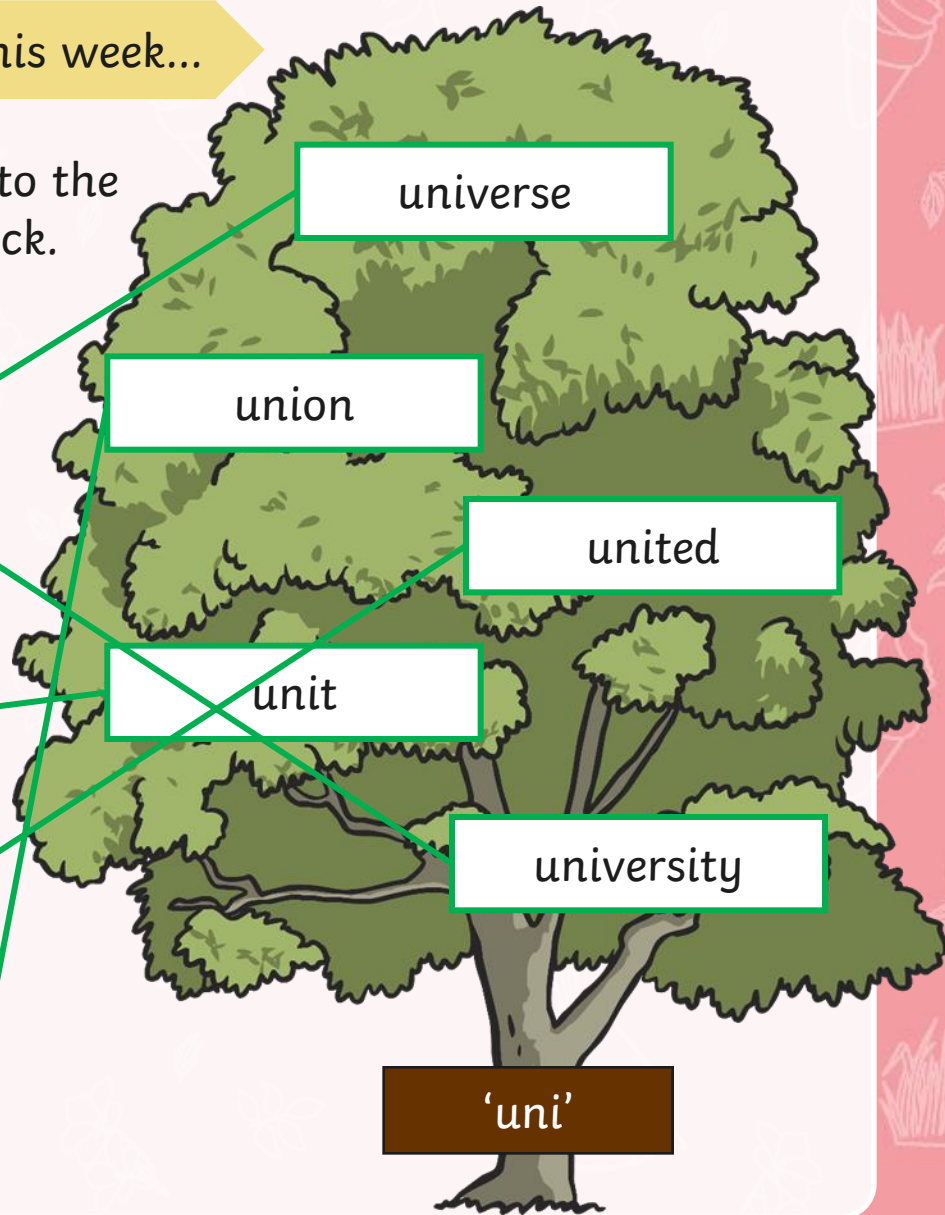
The name for everything – all matter and space.

The place to study for a degree after leaving school.

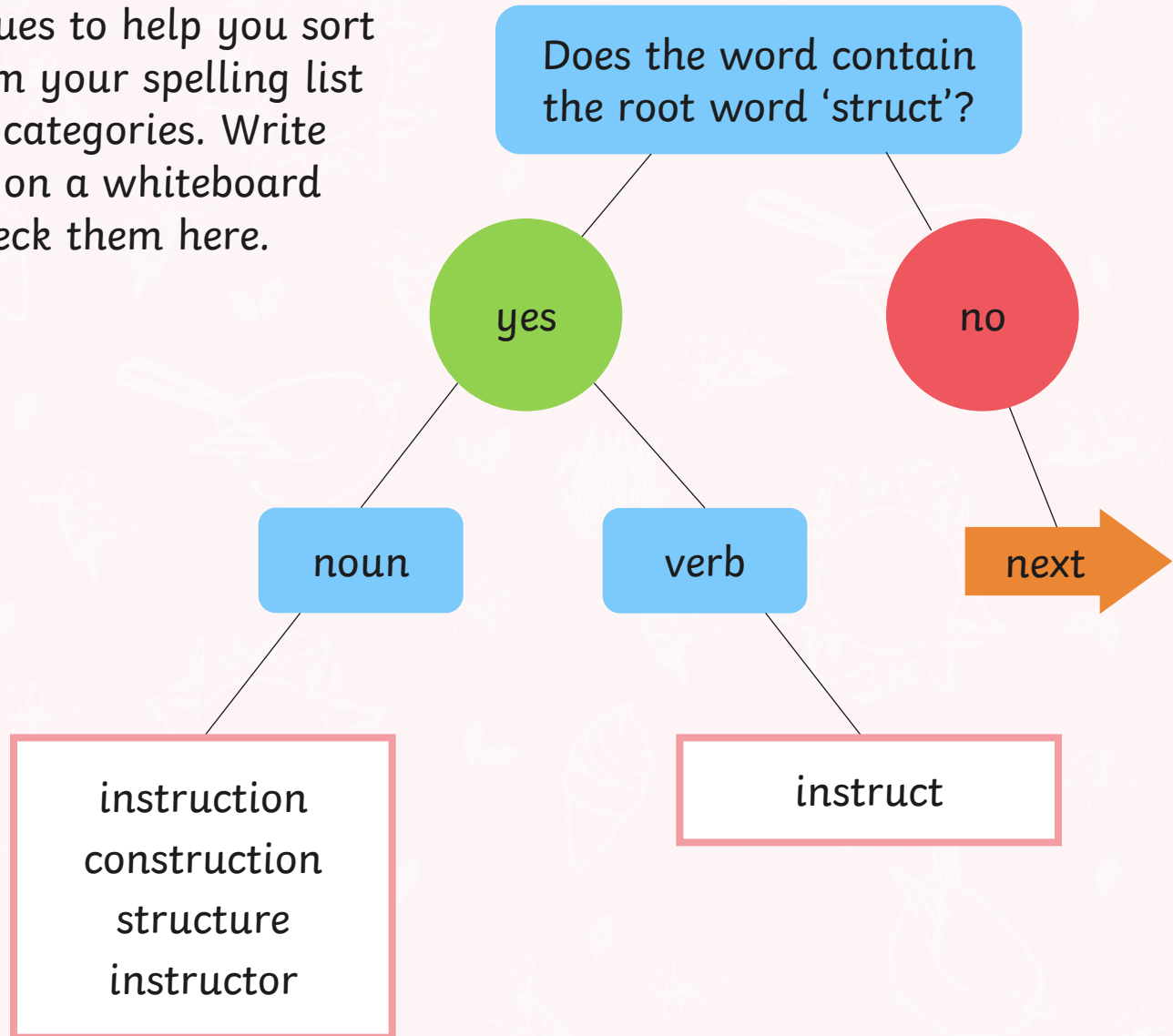
One single person or thing.

An adjective to describe people who are joined together.

The name of a group of people who are joined together for some reason.

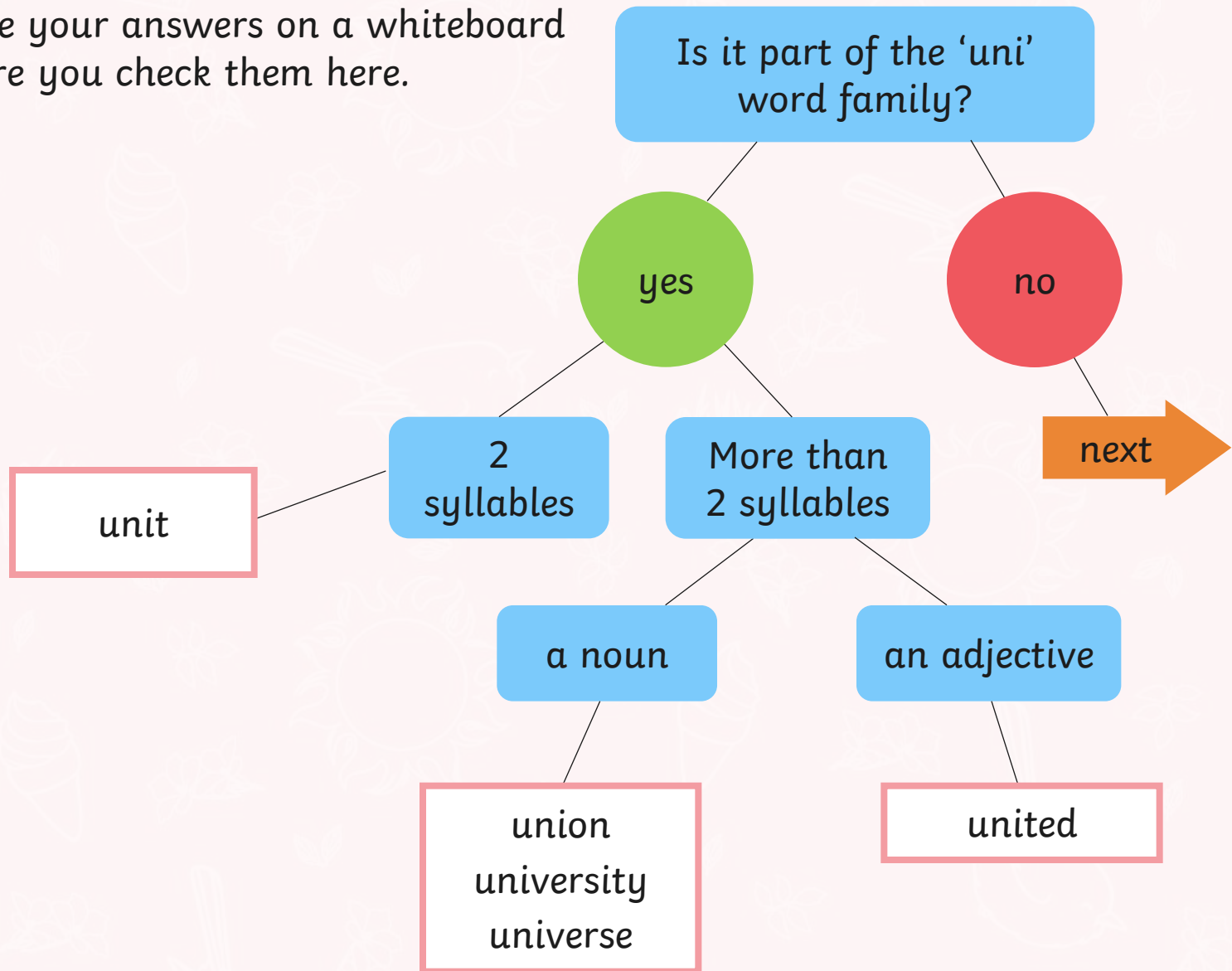


Look at the clues to help you sort the words from your spelling list into the right categories. Write your answers on a whiteboard before you check them here.





Write your answers on a whiteboard before you check them here.



# Congratulations!

You have sorted your spelling words according to the criteria.

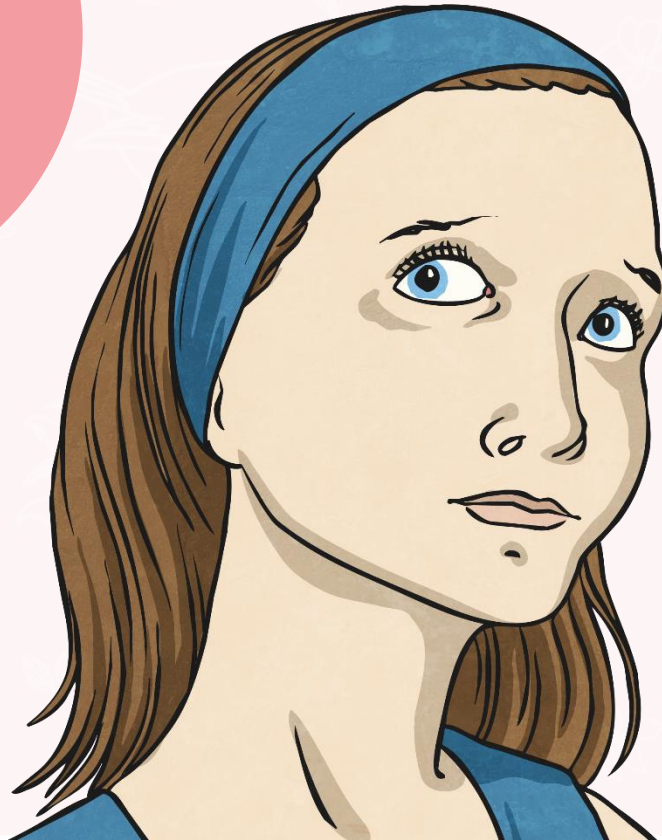
Can you think of any other ways of sorting your spelling words?





Here are your spelling words for this week.

Work hard to  
practise these  
'struct' and 'uni'  
word families  
spellings.



**instruct**  
**structure**  
**construction**  
**instruction**  
**instructor**  
**unit**  
**union**  
**united**  
**universe**  
**university**



twinkl