

# Word Classes



twinkl

# Word Classes

When writing, each word we use has a different function.

For example:

Yesterday, a lovely lady was helping the poorly swans by the river.

Click on each colour to find out more about the word's function.

**Jump to  
Quick Quiz**



Back

# Nouns

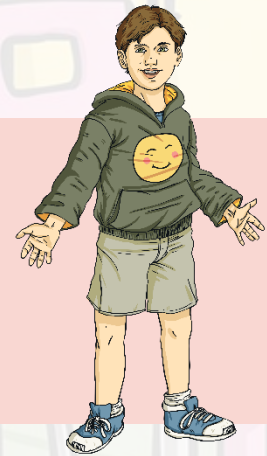
Nouns are naming words for things, animals, people, places and feelings.



apple



Manchester



happiness

Back

# Verbs

Verbs are words used to describe an action, occurrence or state.



ran



screams



mixed



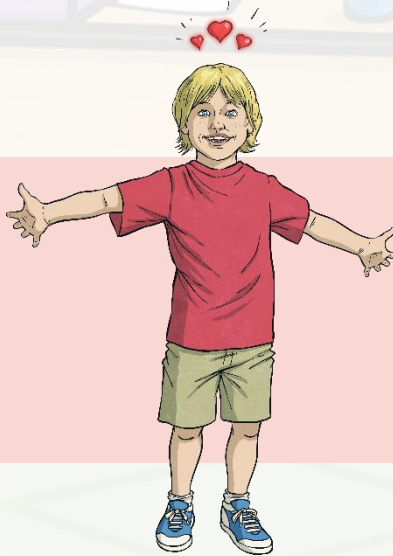
Back

# Adjectives

**Adjectives** are words which describe nouns.



soft



lovely



brave

Back

# Adverbs

**Adverbs** are words which describe when, where or how an action is being carried out.



regularly

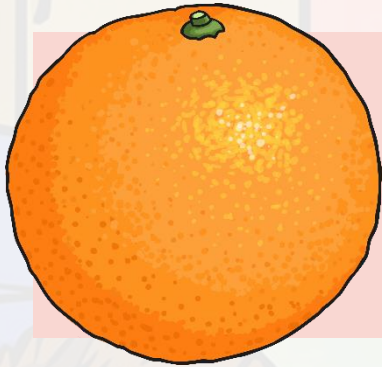
dangerously

often

Back

# Determiners

**Determiners** are words that introduce a noun and identify it in detail.



an

60

sixty



my



Back

# Prepositions

**Prepositions** are linking words in a sentence, used to show where things are in time or space.



beside



upon



towards



Back

# Forms of the Verb 'to be'

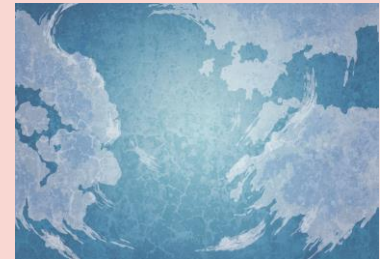
The verb 'to be' is an irregular verb, and comes in many forms. They often link a noun and a description. For example: I **am** happy. The cats **are** ginger.



The flowers **were** yellow.



The cat **was** fluffy.



The sky **is** blue.



**Back**

# Word Class Quick Quiz

Which word class does this word belong to? Click the answer below to find out if you are correct.

**banana**

**noun**

**verb**

**adjective**

**'to be' verbs**

**adverb**

**determiner**

**preposition**





**Back**

# Word Class Quick Quiz

Which word class does this word belong to? Click the answer below to find out if you are correct.

**am**

**noun**

**verb**

**adjective**

**'to be' verbs**

**adverb**

**determiner**

**preposition**



**Back**

# Word Class Quick Quiz

Which word class does this word belong to? Click the answer below to find out if you are correct.

**our**

noun

verb

adjective

'to be' verbs

adverb

determiner

preposition





**Back**

# Word Class Quick Quiz

Which word class does this word belong to? Click the answer below to find out if you are correct.

**collapses**

noun

verb

adjective

'to be' verbs

adverb

determiner

preposition



**Back**

# Word Class Quick Quiz

Which word class does this word belong to? Click the answer below to find out if you are correct.

**joyously**

noun

verb

adjective

'to be' verbs

adverb

determiner

preposition





Back

# Word Class Quick Quiz

Which word class does this word belong to? Click the answer below to find out if you are correct.

**were**

noun

verb

adjective

'to be' verbs

adverb

determiner

preposition



Back

# Word Class Quick Quiz

Which word class does this word belong to? Click the answer below to find out if you are correct.

**bright**

noun

verb

adjective

'to be' verbs

adverb

determiner

preposition





**Back**

# Word Class Quick Quiz

Which word class does this word belong to? Click the answer below to find out if you are correct.

**upon**

noun

verb

adjective

'to be' verbs

adverb

determiner

preposition



Back

# Word Class Quick Quiz

Which word class does this word belong to? Click the answer below to find out if you are correct.

**was**

noun

verb

adjective

'to be' verbs

adverb

determiner

preposition



**Back**

# Word Class Quick Quiz

Which word class does this word belong to? Click the answer below to find out if you are correct.

**teacher**

noun

verb

adjective

'to be' verbs

adverb

determiner

preposition





[Back](#)

# Word Class Quick Quiz

Which word class does this word belong to? Click the answer below to find out if you are correct.

**its**

noun

verb

adjective

'to be' verbs

adverb

determiner

preposition



**Back**

# Word Class Quick Quiz

Which word class does this word belong to? Click the answer below to find out if you are correct.

**is**

**noun**

**verb**

**adjective**

**'to be' verbs**

**adverb**

**determiner**

**preposition**



Back

# Word Class Quick Quiz

Which word class does this word belong to? Click the answer below to find out if you are correct.

**soon**

noun

verb

adjective

'to be' verbs

adverb

determiner

preposition





**Back**

# Word Class Quick Quiz

Which word class does this word belong to? Click the answer below to find out if you are correct.

**admire**

noun

verb

adjective

'to be' verbs

adverb

determiner

preposition

